

Coupe 117 601	Hardtop 201 601
Cabriolet 155 601	Roadster 89 601

the carburetor linkage has been modified.

#### General Remarks

The metal connecting piece between the long accelerator rod and the tie rod on the bell crank is replaced by a flexible piece, see Fig. 6/3. This eliminates the vibration between engine and accelerator pedal.

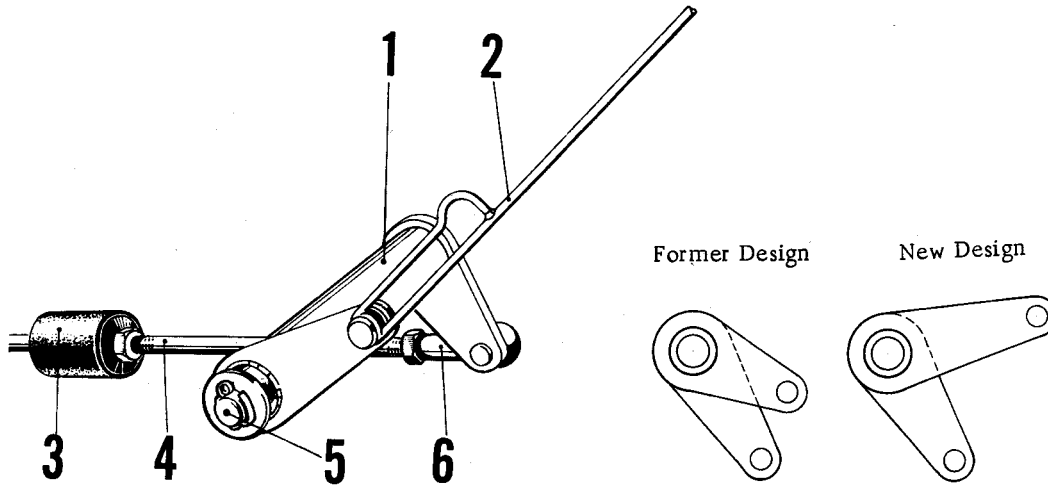


Fig. 6

- |                    |   |
|--------------------|---|
| 1. Bell crank      | 4. Accelerator rod to the accelerator pedal |
| 2. Accelerator rod | 5. Bearing bolt                             |
| 3. Flexible piece  | 6. Control-rod                              |

By modifying the bell crank of the carburetor linkage on transmission, a progressive opening of the throttles is possible. This allows a slow opening of the throttles during the first one third of the accelerator pedal travel and results in soft driving, especially in traffic. The table below shows the relation of the throttle valve position to the accelerator pedal travel.

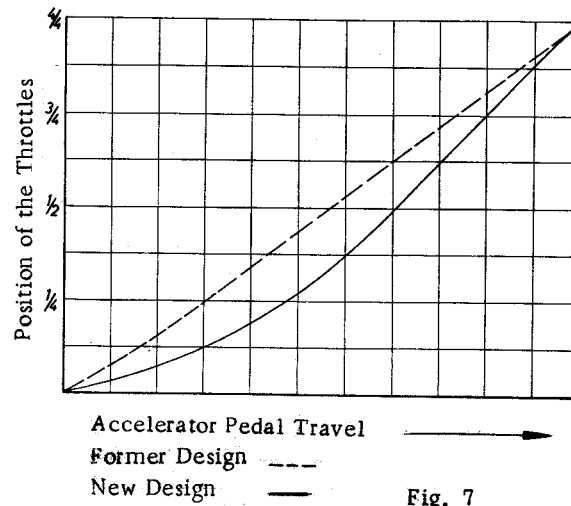


Fig. 7

## CARBURETOR LINKAGE ADJUSTMENT

### General Remarks

To ensure the entire progressive effect and to guarantee free movement of the parts, the carburetor linkage must be carefully adjusted.

1. After having adjusted the carburetor linkage on the engine as described in the 356B Workshop Manual (FU 4 and FU 13) the bell crank on the fan housing must be adjusted so that the distance between the ball joint center and the fan housing is approx. 50 mm. In this position the long bell crank lever is parallel to the accelerator rod, see Fig.

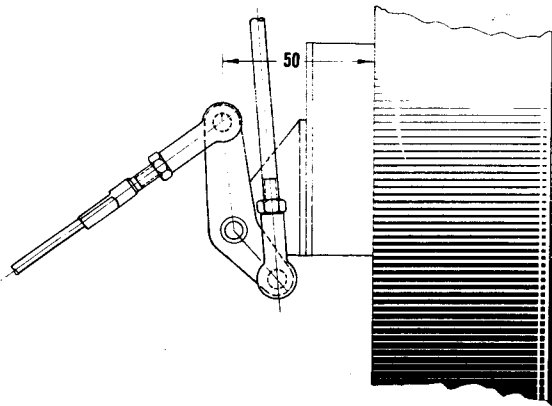


Fig. 8

2. Adjust accelerator rod between bell crank on the fan housing, see Fig. 8, and the bell crank on the transmission housing so that the distance from the rotation center to the ball joint center is 20 to 21 mm (see Fig.)

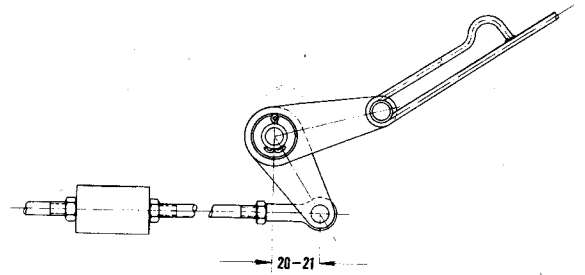


Fig. 9

3. Adjust accelerator rod between the lever on the accelerator pedal and the bell crank on the transmission housing so that the ball pan can be pressed in without tension.
4. Adjust accelerator pedal on the linkage so that the distance from the accelerator pedal upper edge to the floor board is approx. 80 mm.
5. When the accelerator pedal is depressed to the stop screw on the floor board, make sure that the throttle is open without stress, a 2 to 3 mm clearance at the throttle stop is recommended. Adjust stop screw of the accelerator pedal, if necessary.

## HAND THROTTLE ADJUSTMENT

The hand throttle allows the engine to be warmed up at a relatively low number of revolutions when the car is not moving.

The hand throttle must be adjusted as follows.

### Attention

The hand throttle must be adjusted if the engine is warm.

1. Loosen clamping piece serving as a stop from the bowden control.
2. Pull knob on the hand throttle slowly until the tachometer indicates 2500 RPM. Turning the knob clockwise locks it in position.
3. Adjust clamping piece to the stop on the bowden control (see Fig. distance A) and tighten.

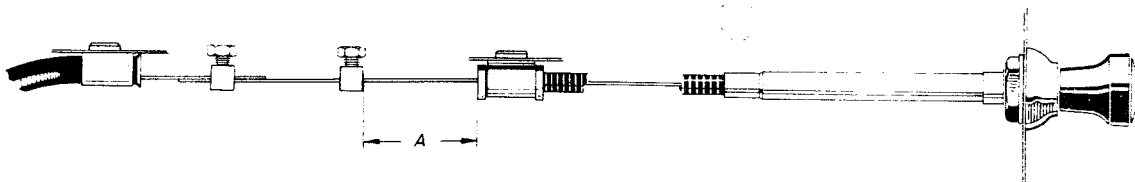


Fig. 10